

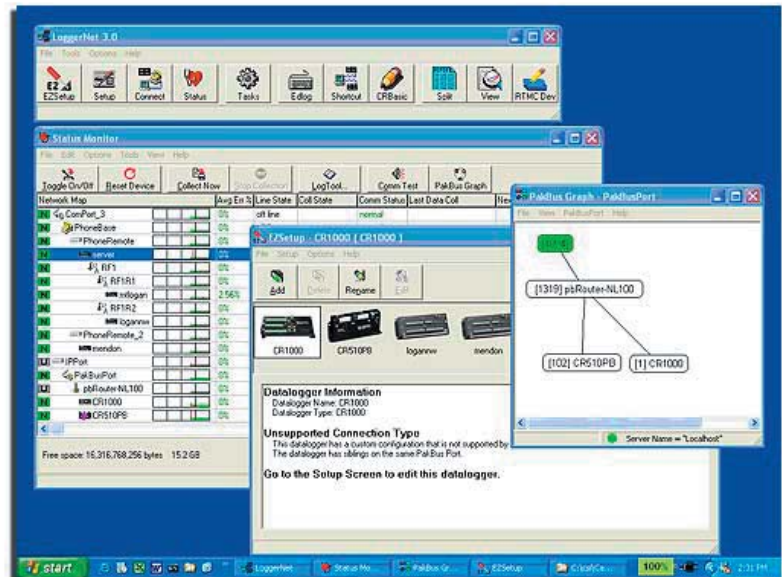
# Datalogger Support Software

## LoggerNet 3.1 series

LoggerNet, our full-featured software, facilitates programming, communications, and data retrieval between Campbell Scientific dataloggers and a PC. This 32-bit software supports all contemporary dataloggers (including the CR1000), all datalogger operating systems (e.g., mixed-array, table data, PAKBUS®), and many retired dataloggers (e.g., CR500, CR10, 21X).

The software allows you to:

- Create custom datalogger programs
- Convert Edlog programs for the CR10X to CRBasic programs for the CR1000
- Display or graph data
- Build a custom display screen to view data or control flags/ports
- Collect data on demand or schedule
- Retrieve data using any of our telecommunications options
- Post process data files
- Export data to third-party analysis packages
- Communicate with storage modules
- Download new datalogger operating systems and configure devices



Besides supporting communications between one datalogger and a PC, LoggerNet can manage small and large datalogger networks.

### Server/Client Applications

LoggerNet consists of a server application and several client applications integrated into a single product. The server application is the heart of LoggerNet communications. It runs on the main PC, using serial ports, telephony drivers, and Ethernet hardware to communicate with dataloggers via phone modems, RF devices, and other peripherals. The server stores the data in a cache and writes data to ASCII files. Client applications connect to the server to change its settings and extract data. Client applications run on the same PC as the server application, providing a "one computer feel." The LoggerNet toolbar can also launch applications to create datalogger programs (Short Cut, Edlog, CRBasic Editor) or process data (Split), or graph/display data (View, RTMC). Several stand-alone LoggerNet Clients are available that can run on remote PCs to distribute data to remote files, PC displays, OPC applications, and web browsers; see the LoggerNet Client product literature for more information.



**CAMPBELL SCIENTIFIC, INC.**

815 W. 1800 N. • Logan, Utah 84321-1784 • (435) 753-2342 • FAX (435) 750-9540 • www.campbellsci.com

## ***EZ Setup Wizard***

This simple station-oriented wizard walks you through the setup process. The wizard can also be used to modify settings for an existing site.

## ***Setup, Connect, Status, LogTool, Troubleshooter***

These tools are used to set or change datalogger parameters, monitor status of network communications, reset the datalogger's clock, display data, send programs from the computer to the datalogger, collect data on demand or according to a schedule, and discover the cause of communication problems. Communication links supported include direct serial, TCP/IP, telephone, radio (VHF/UHF or spread spectrum), cellular phone, short-haul or multidrop modems.

## ***Short Cut, Edlog, CRBasic Editor, Transformer***

LoggerNet provides a choice of programming tools. Short Cut is the easiest to use, generating straightforward programs in four easy steps. It supports over 100 sensors (including generic measurements) and multiplexers. Short Cut can also be used for the ET106 or MetData1 weather stations.

Edlog and the CRBasic Editor provide more sophisticated program editing capabilities. Both of these program editors use select-from-a-list and fill-in-the-blank sequences to develop the datalogger program. They differ in the dataloggers they support. Edlog supports the CR500, CR510, CR10(X), 21X, CR23X, and CR7. CRBasic supports the CR200-series, CR1000, CR5000, and CR9000(X). The Transformer tool converts an Edlog program for the CR10X to a CRBasic program for the CR1000.

## ***Split***

Split is used to post process data files and create reports. It sorts and combines data based on time or conditions, performs calculations on data values, converts "day of year" calendar dates into more traditional date/time stamps, and allows variable column widths for printable reports, as well as a simple html-formatted report.

## ***View***

View provides tabular displays or simple line-graphs of one or two elements from a data file. The graphs can be saved as BMP, WMF or EMF files. The left and right y-axes can be configured independently.

## ***Real-Time Monitoring and Control (RTMC)***

RTMC is used to create custom displays of real-time data, flags, ports, and historical data. It provides digital, tabular, graphical, and Boolean data display objects, as well as alarms. You can combine data from multiple dataloggers on one display. Complex displays can be organized on multi-tabbed windows. Also available as separate products are the RTMCRT client that allows remote PCs to display RTMC forms, and the RTMC Web Server that converts RTMC forms into HTML files for Web site displays. For more information see the LoggerNet Client product literature.

## ***PAKBusGraph***

PAKBUSGraph provides a graphical display of the LoggerNet server's PAKBUS routing table. From this graphical display, you can configure PAKBUS devices and change settings in remote devices.

## ***SMS***

SMS retrieves all or part of the storage module's data and transfers datalogger programs to and from storage modules. It's compatible with our SM4M, SM16M, SM716, and SM192 storage modules, and our CSM memory cards.

## ***Device Configuration Utility (DevConfig)***

DevConfig allows you to send new operating systems to devices with FLASH memory, configure various PakBus settings in dataloggers, and edit settings for communication peripherals such as the MD485 and RF400. DevConfig includes instructions for connecting each device to the PC and provides Help for each setting.

## ***Compatibility with Existing CSI Software***

Files and network maps created from previous versions of LoggerNet or PC208W are compatible with LoggerNet 3.1.

## ***Computer Requirements***

The minimum recommended hardware is a Pentium II processor with 128 Mbytes of RAM and a screen resolution of at least 800 x 600. LoggerNet is optimized for features in Windows NT, 2000, or XP that maximize the reliability of unattended scheduled data collection and multitasking applications programs. The computer must also have at least 100 MB of free disk space.



**CAMPBELL SCIENTIFIC, INC.**

815 W. 1800 N. • Logan, Utah 84321-1784 • (435) 753-2342 • FAX (435) 750-9540  
Offices also located in: Australia • Brazil • Canada • England • France • South Africa • Spain

Copyright © 2004, 2005  
Campbell Scientific, Inc.  
Printed January 2005